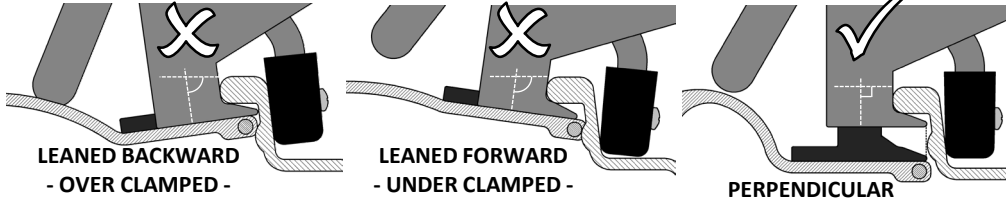


The most important factor when using the BeadBuster is having proper alignment with the rim. The Tool Body must be drawn in within 1/8" of the edge of the rim, ideally touching it. Some stubborn tires result in the tool being out of alignment once contact is made.

If the tool is leaned backward (**Over Clamped**), the Ram Foot will engage the Bead Retainer and damage to the tool and rim is likely.

If the tool is leaned forward or not pulled in far enough (**Under Clamped**), the Ram Foot may miss the Bead Bundle entirely and puncture the side wall.

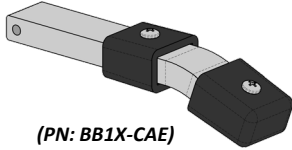
The BeadBuster must be aligned roughly perpendicular to the face of the rim before running down the Ram Foot.



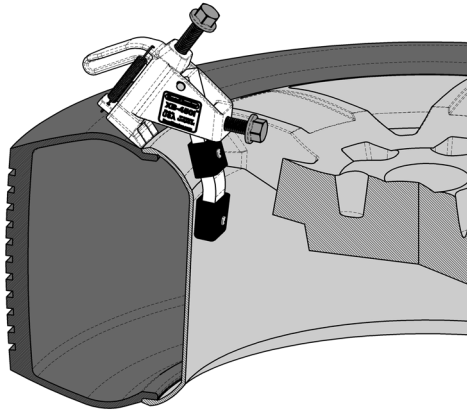
### Accessory Clamp Arms Available for Special Applications

The BeadBuster XB-450i comes with a Standard Clamp Arm. There are some special applications that require an accessory clamp arm to properly interface with the wheel. These clamp arms can be purchased at BeadBuster.com.

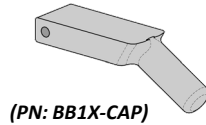
#### EXTENDED CLAMP ARM FOR AUTOMOTIVE CONTOURED RIMS



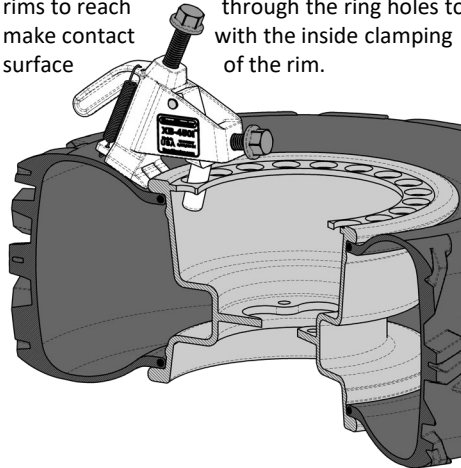
Some Automotive wheels have a clamping surface that is angled or curved. The standard Clamp Arm can't get a grip on these wheels, but the Extended Clamp Arm will reach down deeper into the rim and grip it properly where it is flat.



#### CLAMP POST FOR ATV/UTV REINFORCED RIMS



Reinforced ATV rims (AKA "Rock Rims") have one or both rim lips bolstered with a reinforcing rim stiffener. The clamp post is needed with these rims to reach through the ring holes to make contact with the inside clamping surface of the rim.



# BeadBuster™

## XB-450i

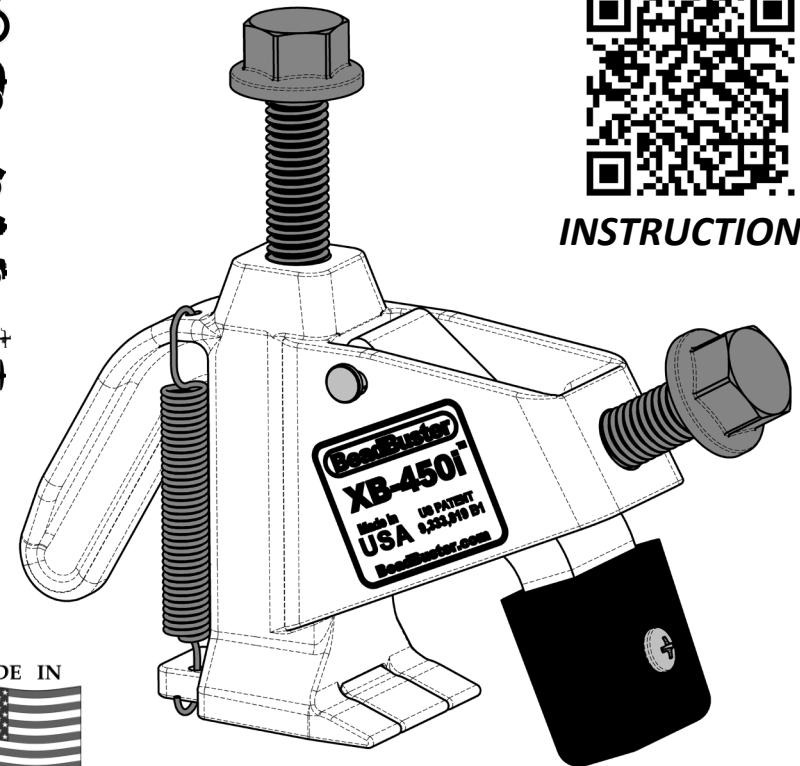
### OWNERS MANUAL v1.0



ONLINE



INSTRUCTIONS



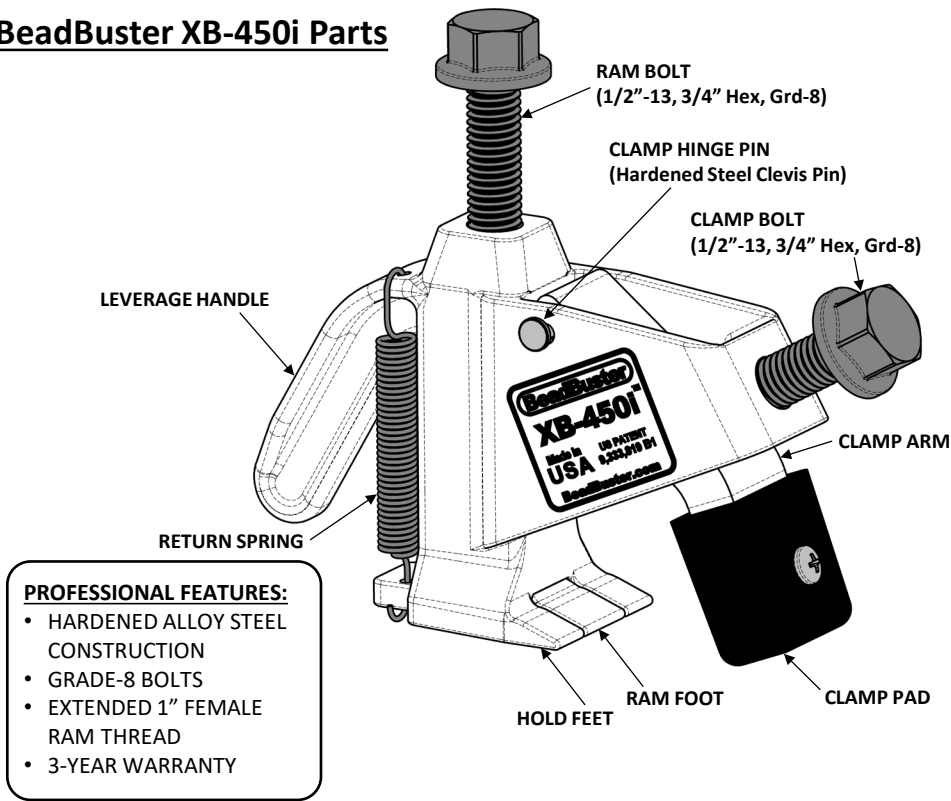
PATENTED  
US 9,333,819 B1

BeadBuster  
711 Vallamont Dr.  
Williamsport, PA 17701  
©2025 BeadBuster. All rights reserved.

www.BeadBuster.com  
info@beadbuster.com  
p. 215-948-2302



## BeadBuster XB-450i Parts



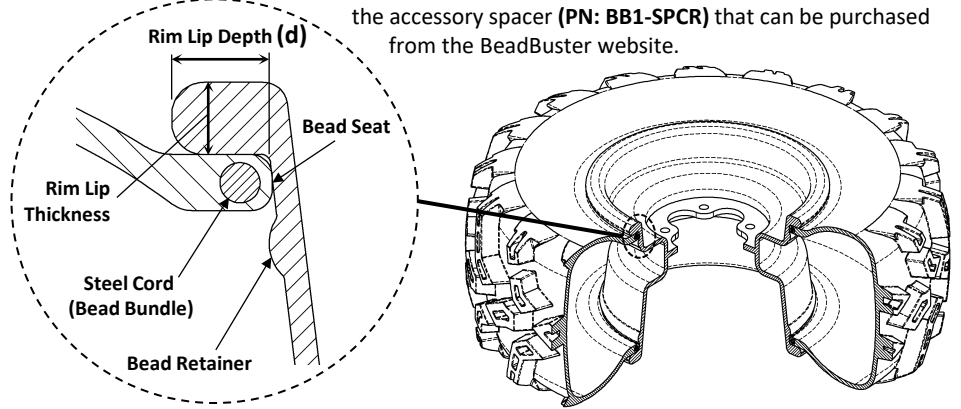
- PROFESSIONAL FEATURES:**
- HARDENED ALLOY STEEL CONSTRUCTION
  - GRADE-8 BOLTS
  - EXTENDED 1" FEMALE RAM THREAD
  - 3-YEAR WARRANTY

### Compatible Wheels



The operating principle of the BeadBuster relies on the Ram Foot reaching as far as possible underneath the lip of the rim so that it covers the steel cord (Bead Bundle), but does not contact the Bead Seat or hit the Bead Retainer when the Ram Foot pushes down.

The minimum **Rim Lip Depth (d)** that the XB-450i can be used on is **0.585"**. Smaller rim lip profiles (such as 7"-8" ATV wheels, *ie. 3-Wheelers and Mini-Quads*) require the accessory spacer (PN: **BB1-SPCR**) that can be purchased from the BeadBuster website.

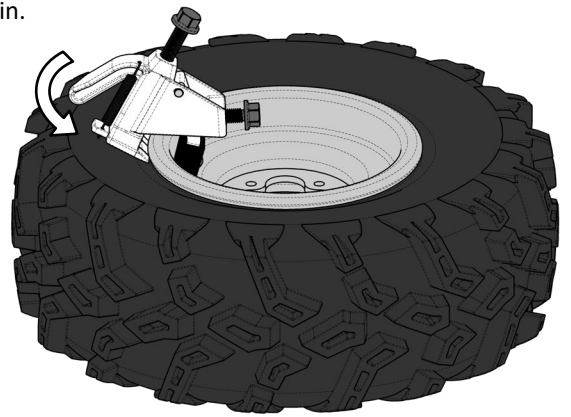


## Instructions for Breaking a Tire Bead

For more detailed instructions and videos, visit our website [www.BeadBuster.com](http://www.BeadBuster.com)

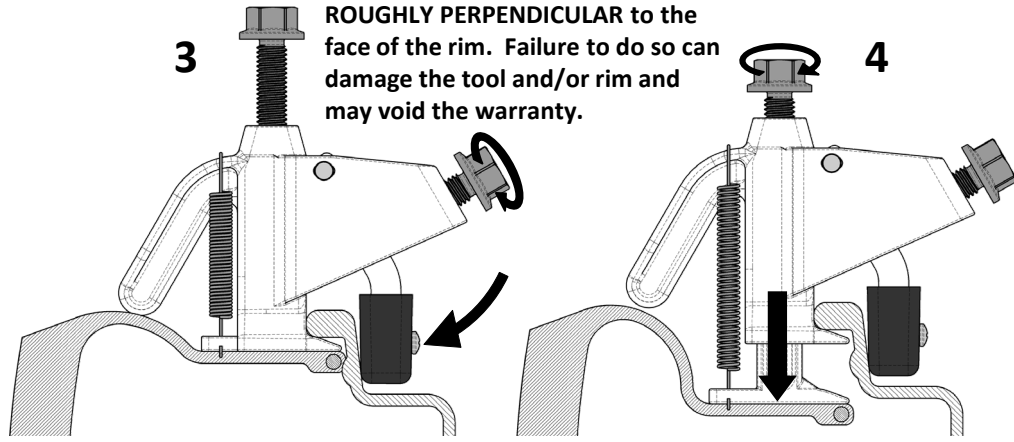
1. Remove the valve core to release air pressure from the tire.
2. Press the BeadBuster feet in between the tire and rim. Use the Leverage Handle to aid in getting the feet positioned. Press down on the sidewall to create a gap between the tire and rim. Lubricate the tire with BeadBuster Tire Lube (or soapy water) to help let the feet slide in.

**DO NOT USE A HAMMER TO FORCE THE TOOL IN PLACE!**



3. Use a 3/4" socket or wrench to tighten the Clamp Bolt on the BeadBuster using an impact wrench or hand wrench. Tighten the Clamp Bolt until the BeadBuster is vertical, and the body is touching the rim. Make sure the BeadBuster feet are fully inserted.

**The mounted tool body MUST BE ROUGHLY PERPENDICULAR to the face of the rim. Failure to do so can damage the tool and/or rim and may void the warranty.**



4. Use a 3/4" socket or wrench to run down the Ram Bolt until the Tire Bead has been pushed past the Bead Retainer on rim. Depending on the age of the tire and condition of the rim, the bead may partially return to the seated position. Make sure not to run the Ram Bolt past the point where the flange head contacts the tool body, which may result in stripping out the threads.

Most tires will not completely break on the 1<sup>st</sup> application of the BeadBuster. If the tire bead is still stuck, advance the BeadBuster a few inches around the rim, and apply the tool again. Repeat as necessary.